

# MONTHLY MEMBERSHIP PROGRESS REPORT

District N 1

Results as of: 10/31/2024

GMT:

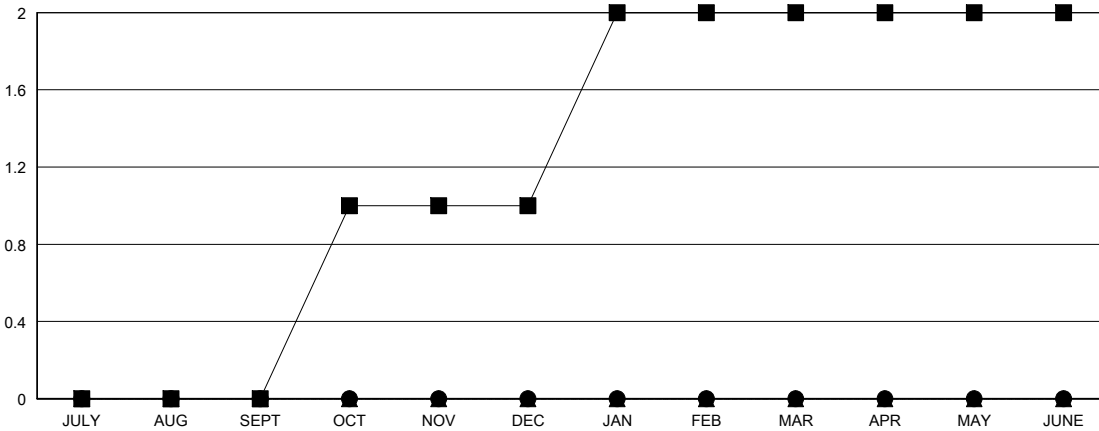
LOCATION PRINCE EDWARD ISLAND

GMT CA

Clubs			
RESULTS FOR 2024-2025			
QUARTER	NEW CLUB GOAL	NEW CLUBS	DROPPED CLUBS
JULY/AUG/SEPT	0	0	1
OCT/NOV/DEC	1	0	0
JAN/FEB/MAR	1	0	0
APR/MAY/JUNE	0	0	0

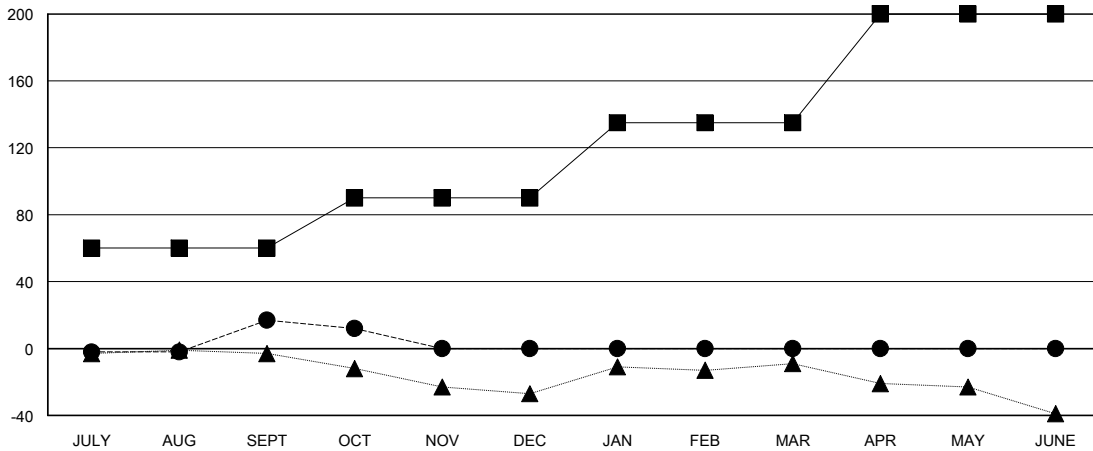
Members			
RESULTS FOR 2024-2025			
QUARTER	MEMBER GROWTH NET GOAL	MEMBER GROWTH ACTUAL	DROPPED MEMBERS ACTUAL (including transfers)
JULY/AUG/SEPT	60	55	35
OCT/NOV/DEC	30	9	14
JAN/FEB/MAR	45	0	0
APR/MAY/JUNE	65	0	0

GOALS AND ACTUAL NEW CLUBS CUMULATIVE



- - CURRENT YEAR GOALS FOR NEW CLUBS
- - CURRENT YEAR ACTUAL NEW CLUBS
- ▲ - LAST YEAR ACTUAL NEW CLUBS

GOALS AND ACTUAL MEMBERS CUMULATIVE



- - MEMBER GROWTH NET GOAL
- - MEMBER GROWTH ACTUAL
- ▲ - LAST YEAR MEMBERSHIP ACTUAL

DROPPED CLUBS: 1	23 CLUBS OF 72 ADDED 1 OR MORE NEW MEMBERS	<b>GENDER DISTRIBUTION</b> MALE 1,084 (69.80%) FEMALE 467 (30.07%)
<b>DROPPED MEMBERS</b> DECEASED 10 CLUB CANCELLED 0 OTHER 39 <b>TOTAL 49</b>	<a href="#">CLICK HERE FOR CUMULATIVE MEMBERSHIP DATA</a>	TOTAL FAMILY UNIT MEMBERS 0 FAMILY MEMBERS PAYING HALF DUES 0